

PLASTON metaBOX

THE CLEVER CASE SYSTEM

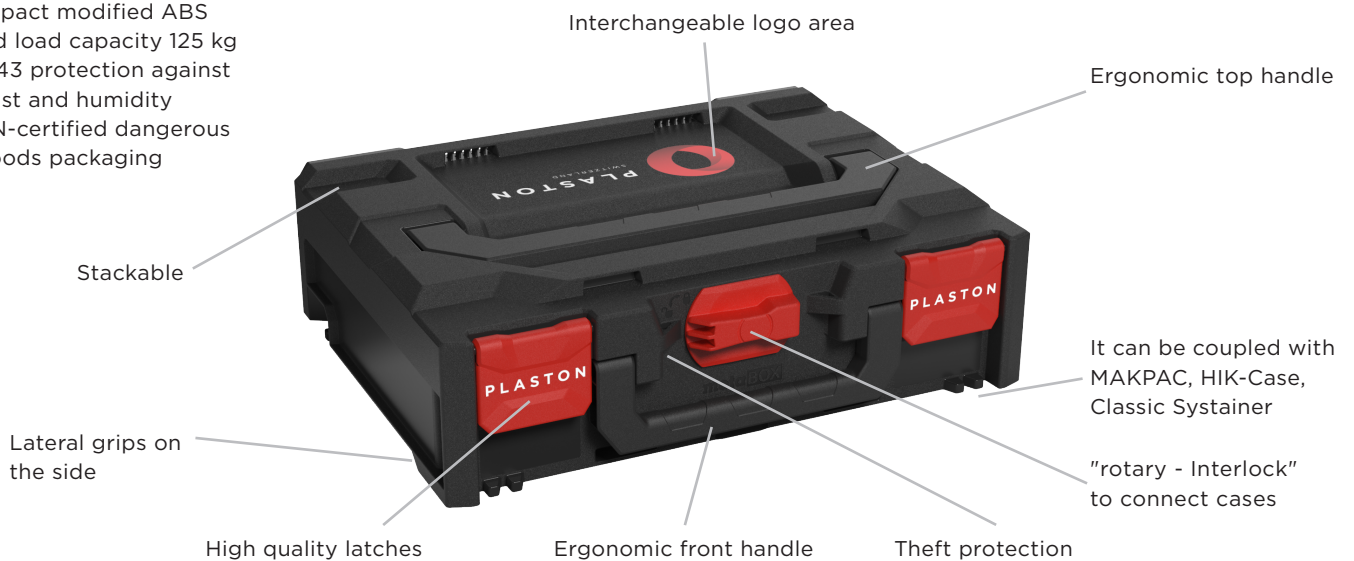


- 17 metaBOX case sizes available
- Robust & organized transport solution for tools and accessories
- UN certified for batteries > 100Wh
- Easy storage and transport
- Connecting with the "rotary Interlock" allows one-handed operation
- Connects to L-Boxx, T-Stak, T-Loc Systainer, MacPac, HIKOKI HIT-System and Classic-Systainer thanks to the metaBOX Multi-Adapter plate



PLASTON CASES ARE ROBUST

- Impact modified ABS
- Lid load capacity 125 kg
- IP43 protection against dust and humidity
- UN-certified dangerous goods packaging



Easy to carry & handle



FRONT HANDLE

- Helps when pulling out cases from shelves or vehicles
- Ideal for carrying single cases upright, close to the body



LID HANDLE

- Ideal for transporting a whole stack of cases



LATERAL GRIPS

- On both sides of each case
- Allow to grasp the case when the handles can't be reached (when upright in shelves)

PLASTON 360° SOLUTION

DO IT YOUR WAY!



Select the colors for the base and lid

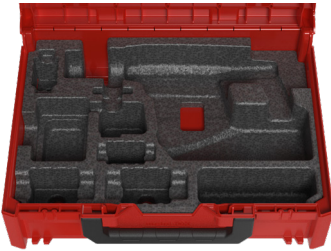


Select the colors of the function elements



Your logo

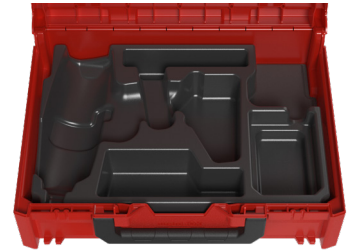
PLASTON CASE CONTENT



EPP-INSERT



FOAM-INSERT



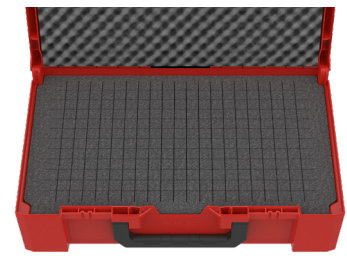
THERMOFORMED-INSERT



BIG CONSUMABLE CASE



ASSORTMENT-BOXES



PLUCKED FOAM-INSERT



3-Row ASSORTMENT TFI

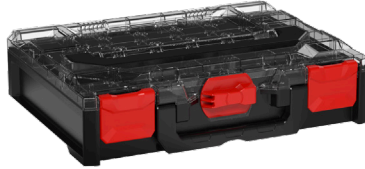


metaBOX 63 XS

External dimensions:
252 x 167 x 63 mm

Inner dimensions:
240 x 137 x 43,5 mm

Weight: 0,46 kg



metaBOX 100 S

External dimensions:
396 x 296 x 100 mm

Inner dimensions:
373 x 264 x 63 mm

Weight: 1,3 kg



metaBOX 118 S

External dimensions:
396 x 296 x 118 mm

Inner dimensions:
379 x 268 x 83 mm

Weight: 1,44 kg



metaBOX 145 S

External dimensions:
396 x 296 x 145 mm

Inner dimensions:
379 x 268 x 110 mm

Weight: 1,57 kg



metaBOX 215 S

External dimensions:
396 x 296 x 215 mm

Inner dimensions:
379 x 268 x 180 mm

Weight: 1,93 kg

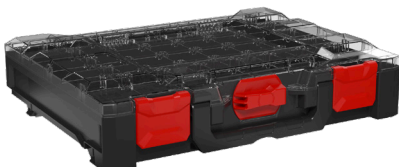


metaBOX 340 S

External dimensions:
396 x 296 x 340 mm

Inner dimensions:
379 x 268 x 305 mm

Weight: 2,51 kg



metaBOX 95 M

External dimensions:
440 x 346 x 95 mm

Inner dimensions:
417 x 314 x 58 mm

Weight: 1,52 kg



metaBOX 145 M

External dimensions:
446 x 345 x 145 mm

Inner dimensions:
429 x 317 x 110 mm

Weight: 1,95 kg



metaBOX 145 L
External dimensions:
496 x 296 x 145 mm
Inner dimensions:
479 x 268 x 110 mm
Weight : 1,85 kg



metaBOX 165 L
External dimensions:
496 x 296 x 165 mm
Inner dimensions:
479 x 268 x 130 mm
Weight: 1,95 kg



metaBOX 280 L
External dimensions:
496 x 296 x 280 mm
Inner dimensions:
479 x 268 x 245 mm
Weight: 2,50 kg



metaBOX 185 XL
External dimensions:
596 x 396 x 185 mm
Inner dimensions:
577 x 361 x 148 mm
Weight: 3,5 kg



metaBOX 300 XL
External dimensions:
596 x 396 x 300 mm
Inner dimensions:
577 x 362 x 262 mm
Weight: 4.5 kg



toolBOX 118 S
External dimensions:
396 x 296 x 126,5 mm
Inner dimensions:
379 x 268 x 113 mm
Weight: 1.25 kg



toolBOX 145 S
External dimensions:
396 x 296 x 153,5 mm
Inner dimensions:
379 x 268 x 140 mm
Weight: 1,35 kg

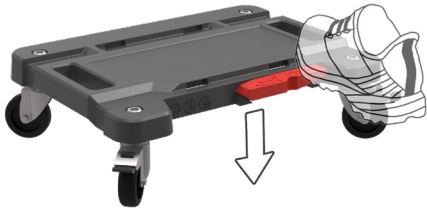


toolBOX 215 S
External dimensions:
396 x 296 x 223,5 mm
Inner dimensions:
379 x 268 x 210 mm
Weight: 1,65 kg

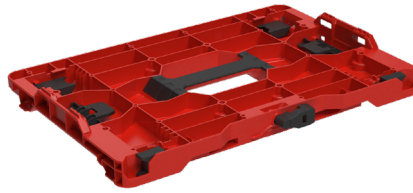


toolBOX 340 S
External dimensions:
396 x 296 x 348,5 mm
Inner dimensions:
379 x 268 x 335 mm
Weight: 2,2 kg

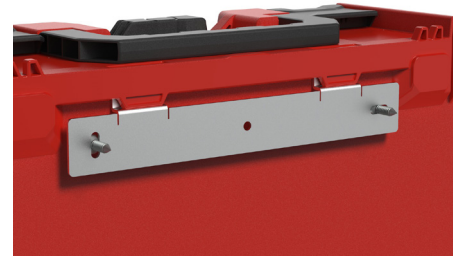
PLASTON ACCESSORIES



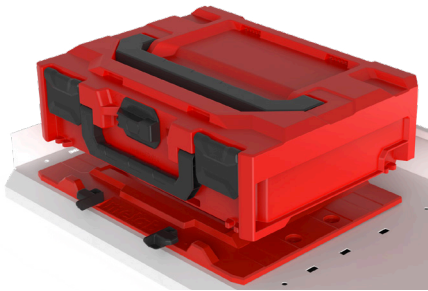
ROLLPLATE



MULTI-ADAPTER PLATE



WALL BRACKET



UNIVERSEL ADAPTERPLATE FOR ANY SHELVE



TROLLEY



COMMUNIKATOR



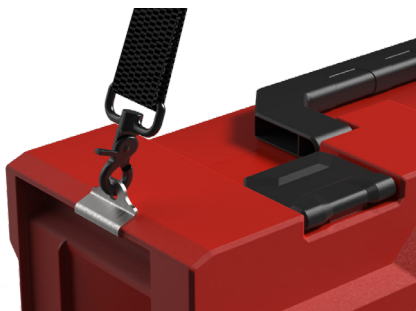
CONNECTION RAIL



CLIPBOARD



ACCESSORY BAG



CARRYING BELT CONNETS TO ANY METABOX CASE.