

# PLASTON metaBOX

## THE CLEVER CASE SYSTEM

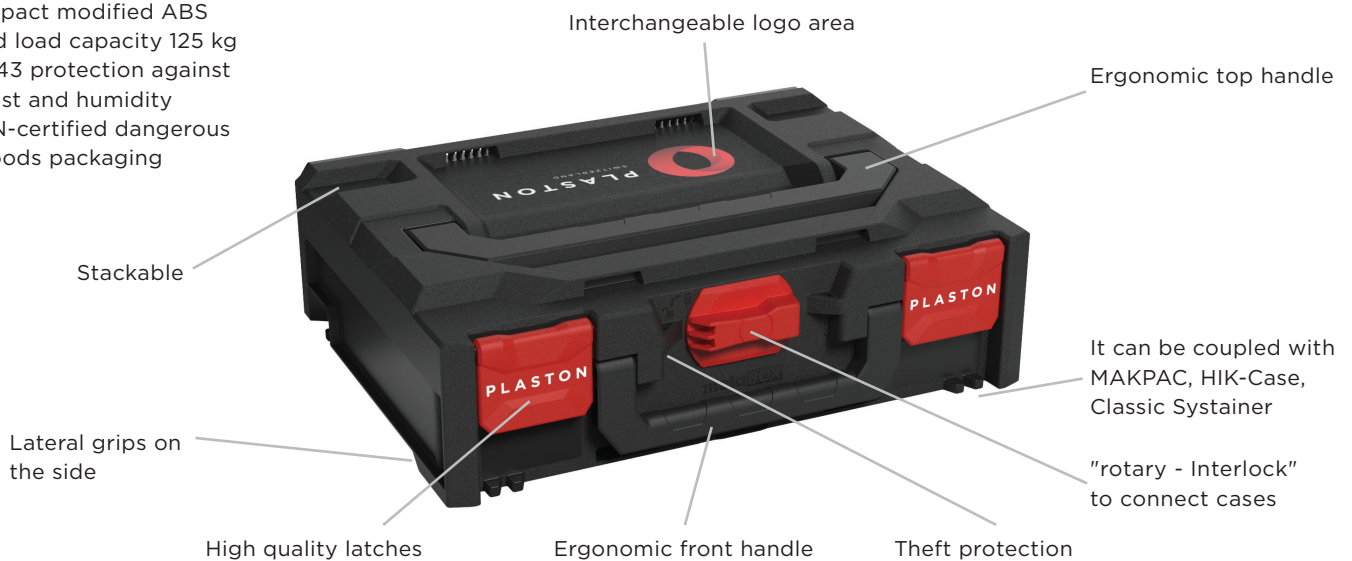


- Robust & organized transport solution for tools and accessories
- UN certified for batteries > 100Wh
- Easy storage and transport
- Connecting with the "rotary Interlock" allows one-handed operation
- Connects to L-Boxx, T-Stak, T-Loc Systainer, MacPac, HiKOKI HIT-System and Classic-Systainer thanks to the metaBOX Multi-Adapter plate



### PLASTON CASES ARE ROBUST

- Impact modified ABS
- Lid load capacity 125 kg
- IP43 protection against dust and humidity
- UN-certified dangerous goods packaging



### Easy to carry & handle



#### FRONT HANDLE

- Helps when pulling out cases from shelves or vehicles
- Ideal for carrying single cases upright, close to the body



#### LID HANDLE

- Ideal for transporting a whole stack of cases



#### LATERAL GRIPS

- On both sides of each case
- Allow to grasp the case when the handles can't be reached (when upright in shelves)

## PLASTON 360° SOLUTION

## DO IT YOUR WAY!



Select the colors for the base and lid



Select the colors of the function elements



Your logo

## PLASTON CASE CONTENT



EPP-INSERT



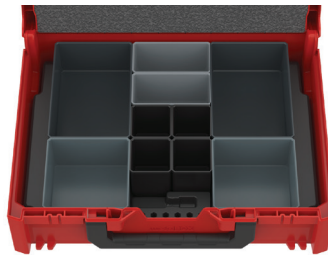
FOAM-INSERT



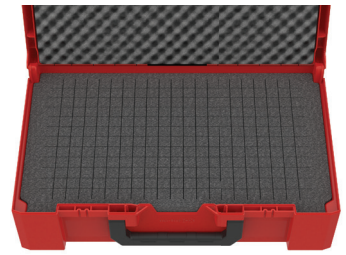
THERMOFORMED-INSERT



ASSORTMENT-INSERT



ASSORTMENT-BOXES



PLUCKED FOAM-INSERT



**metaBOX 63 XS**

External dimensions:

252 x 167 x 63 mm

Inner dimensions:

239 x 147 x 40 mm

Weight: 0,46 kg



**metaBOX 118 S**

External dimensions:

396 x 296 x 118 mm

Inner dimensions:

379 x 268 x 83 mm

Weight: 1,44 kg



**metaBOX 145 S**

External dimensions:

396 x 296 x 145 mm

Inner dimensions:

379 x 268 x 110 mm

Weight: 1,57 kg



**metaBOX 215 S**

External dimensions:

396 x 296 x 215 mm

Inner dimensions:

379 x 268 x 180 mm

Weight: 1,93 kg



**metaBOX 340 S**

External dimensions:

396 x 296 x 340 mm

Inner dimensions:

379 x 268 x 305 mm

Weight: 2,51 kg



**metaBOX 145 M**

External dimensions:

446 x 345 x 145 mm

Inner dimensions:

429 x 317 x 110 mm

Weight: 1,95 kg



**metaBOX 145 L**

External dimensions:

496 x 296 x 145 mm

Inner dimensions:

479 x 268 x 110 mm

Weight : 1,85 kg



**metaBOX 165 L**

External dimensions:

496 x 296 x 165 mm

Inner dimensions:

479 x 268 x 130 mm

Weight: 1,95 kg



**metaBOX 280 L**

External dimensions:

496 x 296 x 280 mm

Inner dimensions:

479 x 268 x 245 mm

Weight: 2,50 kg



**metaBOX 185 XL**

External dimensions:  
596 x 396 x 185 mm

Inner dimensions:  
577 x 361 x 148 mm

Weight: 3,5 kg



**toolBOX 118 S**

External dimensions:  
396 x 296 x 126,5 mm

Inner dimensions:  
379 x 268 x 113 mm

Weight: 1.25 kg



**toolBOX 145 S**

External dimensions:  
396 x 296 x 153,5 mm

Inner dimensions:  
379 x 268 x 140 mm

Weight: 1,35 kg



**toolBOX 215 S**

External dimensions:  
396 x 296 x 223,5 mm

Inner dimensions:  
379 x 268 x 210 mm

Weight: 1,65 kg



**toolBOX 340 S**

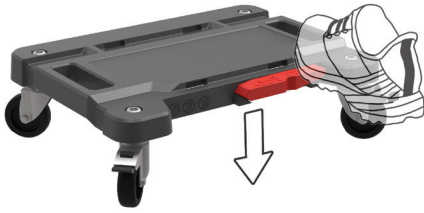
External dimensions:  
396 x 296 x 348,5 mm

Inner dimensions:  
379 x 268 x 335 mm

Weight: 2,2 kg



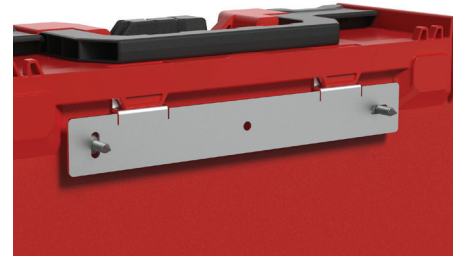
## PLASTON ACCESSORIES



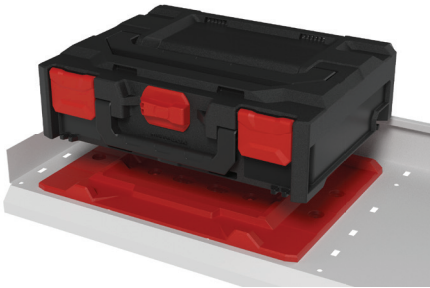
ROLLPLATE



MULTI-ADAPTER PLATE



WALL BRACKET



UNIVERSEL ADAPTERPLATE FOR ANY SHELVE



TROLLEY



COMMUNIKATOR



CONNECTION RAIL



CLIPBOARD



ACCESSORY BAG



CARRYING BELT CONNETS TO ANY  
METABOX CASE.